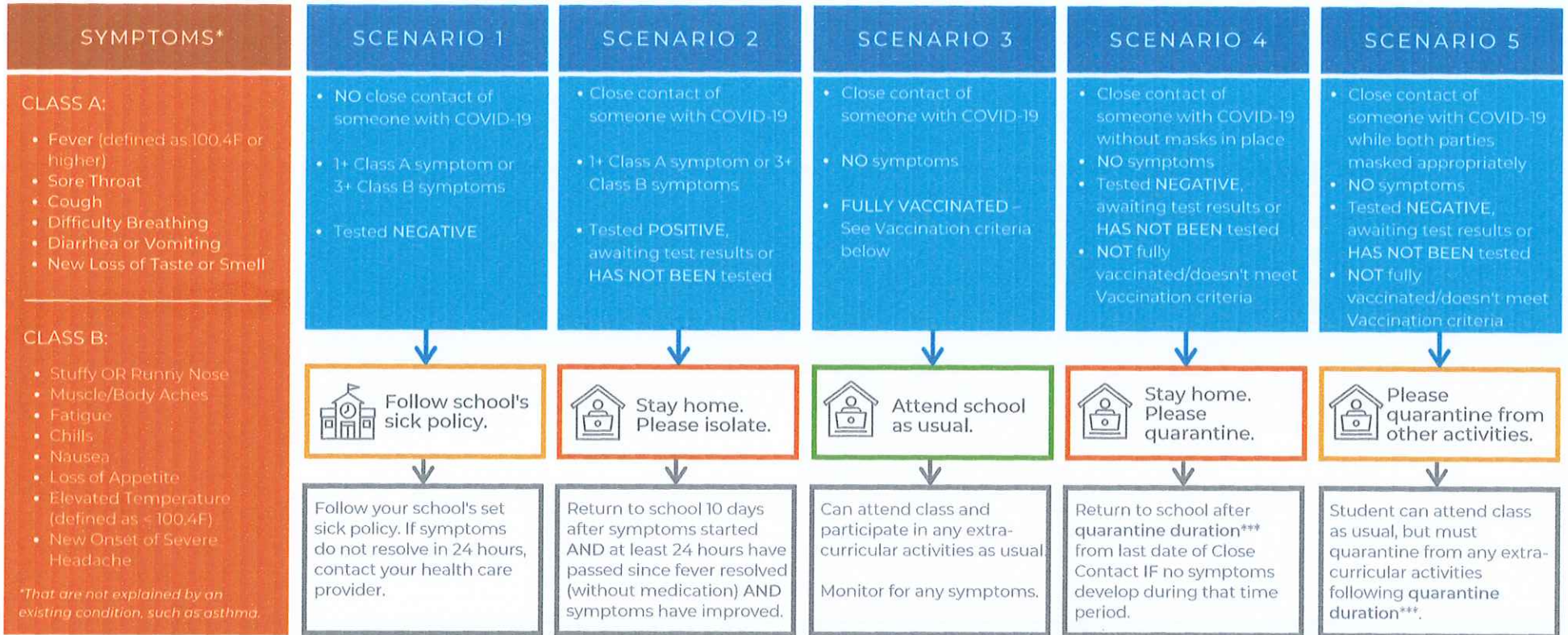




# COVID-19 Student Symptom Scenarios



## \*\*\*QUARANTINE GUIDELINES

Schools may follow three quarantining options. Please be sure you know which option your school has chosen to follow:

- Quarantining students may return to school after day 14 without new or developing symptoms, as recommended by the CDC.
- Return to school after day 10 if the student **HAS NOT** been tested and has **NOT** developed new symptoms.
- With a negative COVID test on or after day 5, students can return to school after day 7 if they have **NO** new symptoms.

## CLOSE CONTACTS

"Close Contact" means being:

- Within 6 ft of a person with COVID-19 for 15 cumulative minutes if both individuals did not consistently wear masks over their nose and mouth **OR**
- Within 3 ft of a person with COVID-19 for 15 cumulative minutes regardless of mask usage.

If masks were worn over the nose and mouth by the positive case and the contact, the contact can attend class (and continue to wear a mask) but should quarantine from any other activities.

*Vaccinated persons who are close contacts of someone with COVID-19 are not required to quarantine if they meet the following criteria\*\*:*

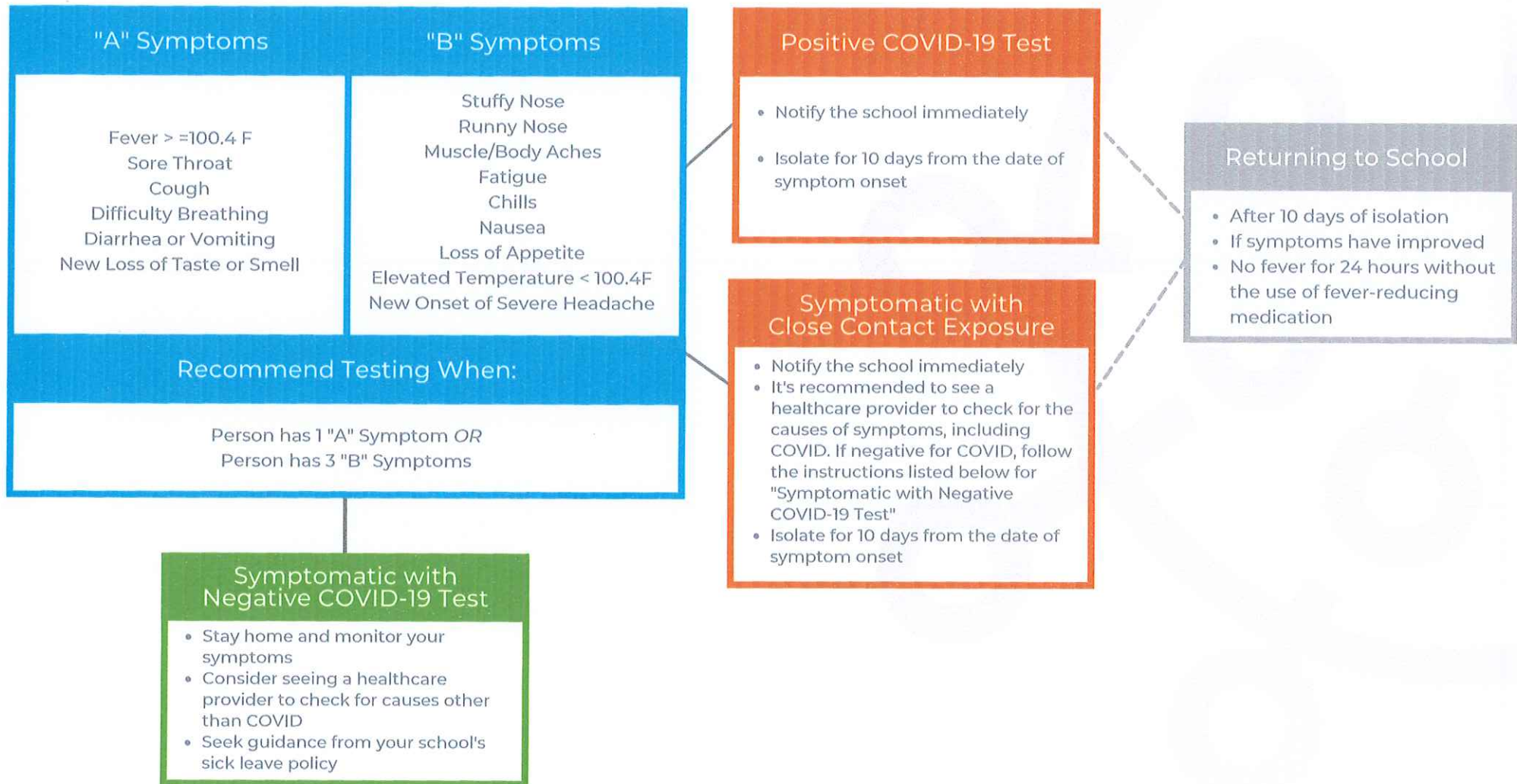
*1. Are fully vaccinated – at least two weeks have passed since their second dose (or single J&J dose). 2. Have not had symptoms since their current COVID-19 exposure.*

*\*\*Vaccinated inpatients and residents in healthcare settings are an exception and should continue to quarantine as before.*





# COVID-19 Symptomatic Illness Assessment





# Options to Reduce Quarantine for Contacts of Persons with COVID-19 Using Symptom Monitoring and Diagnostic Testing

## COVID-19 SYMPTOMS\*

### CLASS A:

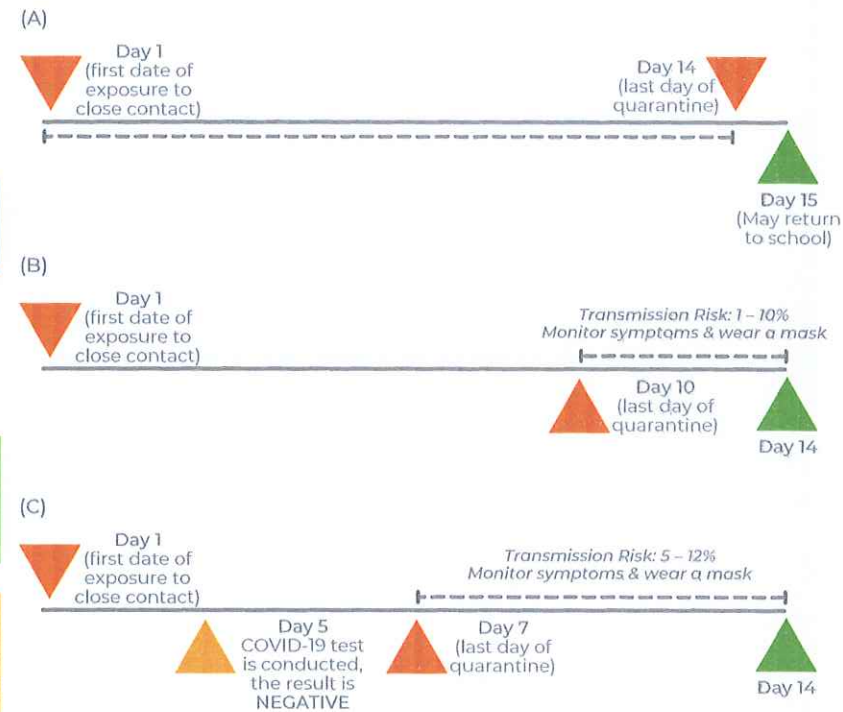
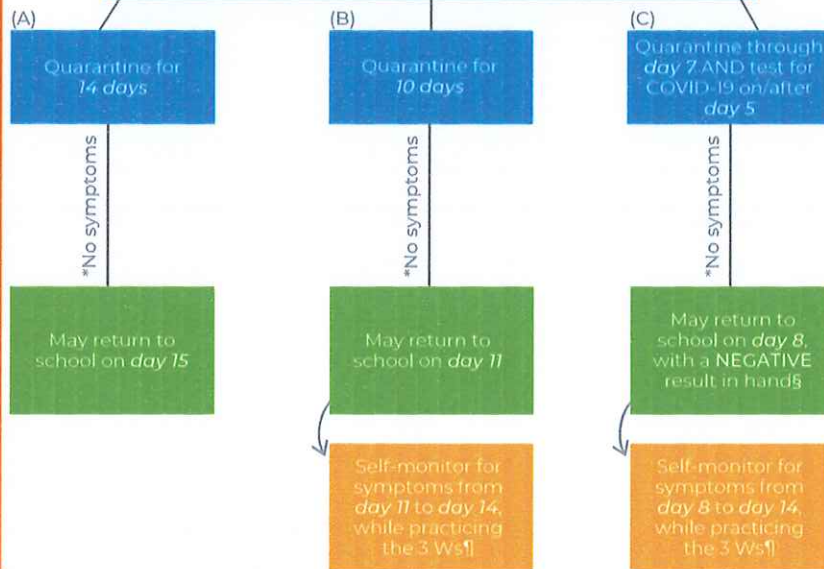
- Fever (defined as 100.4F or higher)
- Sore Throat
- Cough
- Difficulty Breathing
- Diarrhea or Vomiting
- New Loss of Taste or Smell

### CLASS B:

- Stuffy OR Runny Nose
- Muscle/Body Aches
- Fatigue
- Chills
- Nausea
- Loss of Appetite
- Elevated Temperature (defined as > 100.4F)
- New Onset of Severe Headache

\*That are not explained by an existing condition, such as asthma.

A student has been in Close Contact\*\* with an individual who has COVID-19 AND has NO symptoms



## \*\*CLOSE CONTACTS

"Close Contact" means being:  
 Within 6 ft of a person with COVID-19 for 15 cumulative minutes if both individuals did not consistently wear masks over their nose and mouth OR  
 Within 3 ft of a person with COVID-19 regardless of mask usage.

## THE 3 WS

The 3 Ws to help reduce your risk of COVID-19 are:

- Wear a mask
- Wash your hands
- Watch your distance (stay 6 feet apart)

\*CDC. "How to use a COVID-19 test done on a person who is not symptomatic or a PCR test." <https://www.cdc.gov/media/releases/2021/s0811-covid-19-test.html>